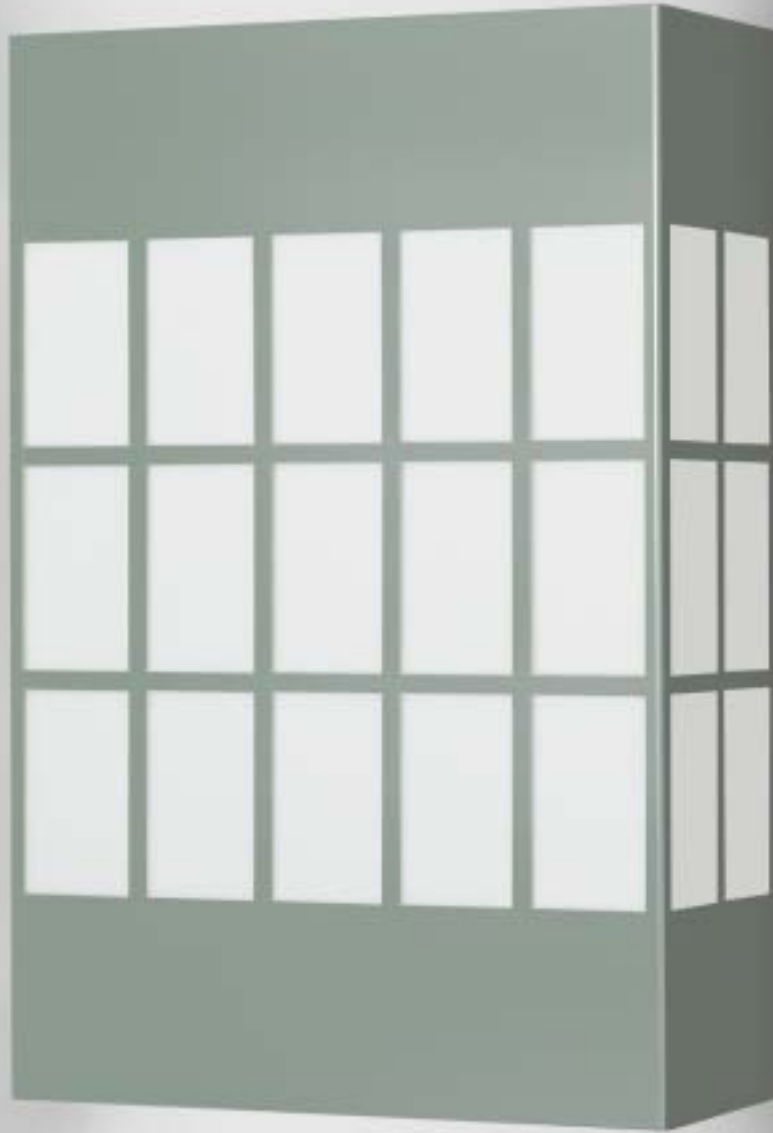


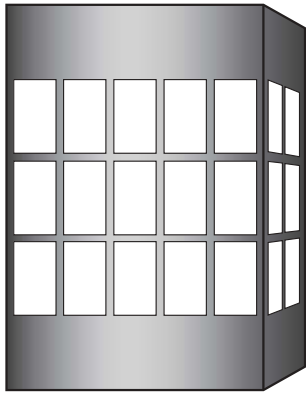
# 571 HID LANTERN



A traditional looking lantern, this luminaire utilizes a Metal Halide source for maximum light output. Rugged construction and hidden fasteners provide years of vandal free operation.

# 571 HID LANTERN

TYPE



Indoor companion fixture available. See page IW-12.

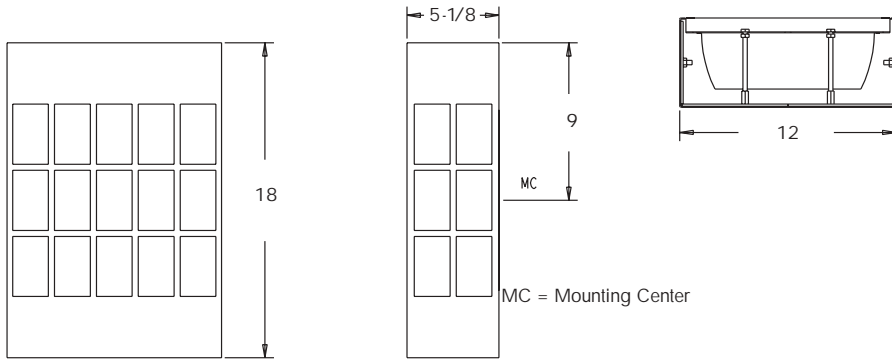
PROJECT: \_\_\_\_\_

LOCATION: \_\_\_\_\_

## FEATURES

- Old Style lantern appearance with a Metal Halide source.
- Multiple window openings allows for maximum light output
- Fully enclosed and gasketed fixture.
- Electronic multi volt (120-277V) ballast is standard.
- All parts are treated with a five stage phosphate bonding process before being finished with a long lasting powder coat finish.
- Integral ballast for easy installation and maintenance.
- No remote mounting of ballast.
- No visible fasteners.
- Made in the USA.

## DIMENSIONS



A 4" octagonal junction box should be used for installation.

**ORDERING INFORMATION / OPTIONS** EXAMPLE: 571-1MH70-SAL

# 571

### MODEL

571 - HID Lantern

### LAMP

**1MH50** - (1) 50W Metal Halide (ED17 Base)

**1MH70** - (1) 70W Metal Halide (ED17 Base)

Consult factory for other available lamps.

### HOUSING FINISH

**WHT** - White

**BLK** - Black

**SAL** - Silver

**BRZ** - Bronze

Consult factory for other finishes.

### OPTIONS

**TP** - Tamperproof Nuts

# Indessa Lighting

3808 N SULLIVAN RD, BLDG 12, STE 5 • SPOKANE, WA • 99216  
PHONE: 509.924.0243 • FAX: 509.924.2607 • www.indessa.com



Indessa Lighting reserves the right to make design revisions without prior notice.

OW-11.1