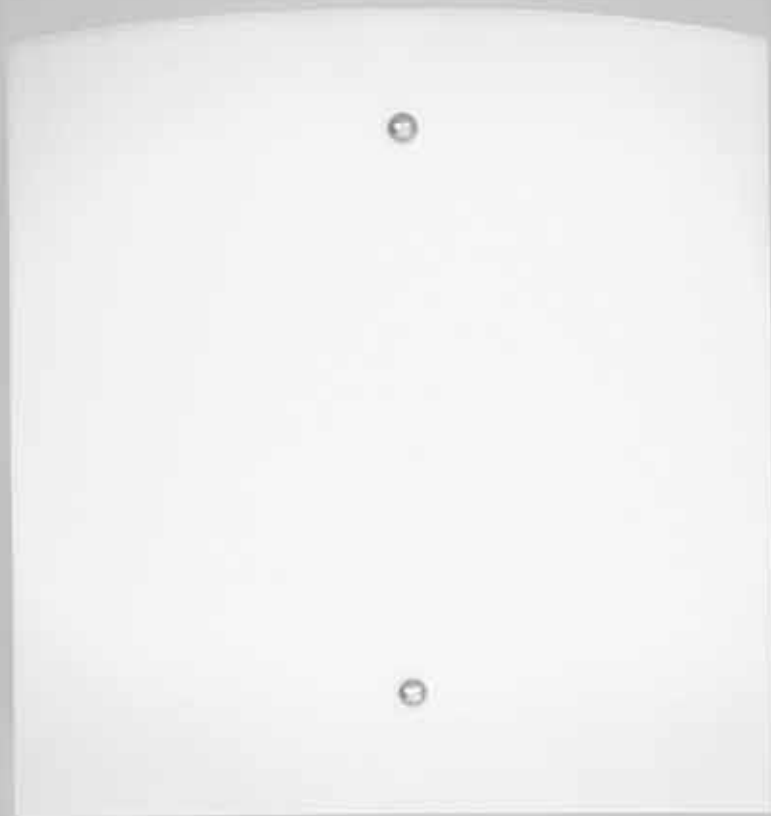


**LED**

# 475 ALTERA

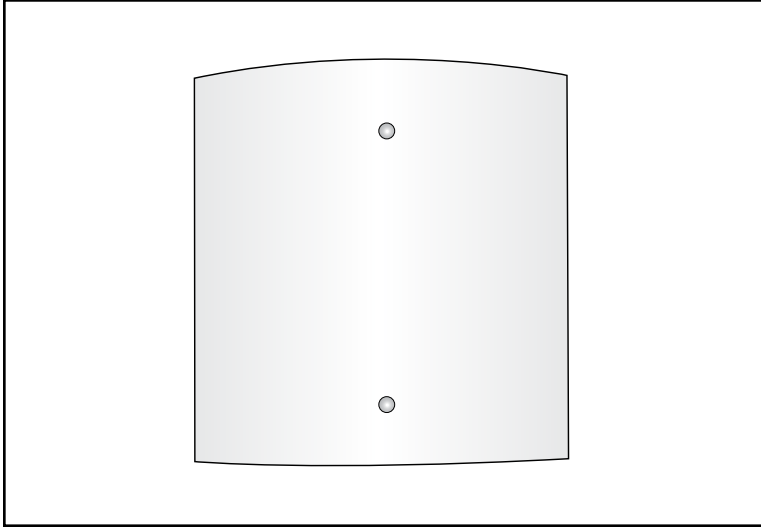


A softly glowing fixture that provides a pleasing and warm feeling. Simple to install, the fixture is perfect for multi-family complexes, healthcare facilities and office buildings.

# 475 ALTERA

**LED**

TYPE



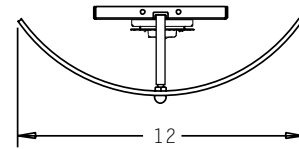
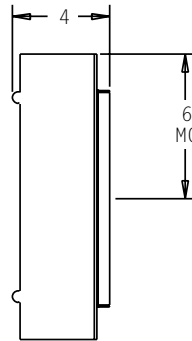
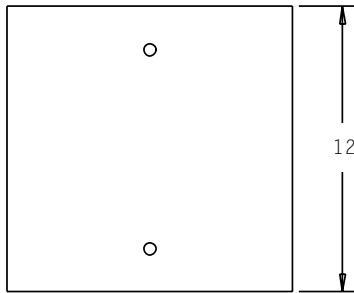
PROJECT: \_\_\_\_\_

LOCATION: \_\_\_\_\_

## FEATURES

- Fascia constructed of 3/16" thick sandblasted acrylic, ensuring no lamp images.
- Contoured lens shields the lamps and melts into the décor.
- A wide choice of lamps can provide varying illumination levels.
- Unitized design allows the fixture to be used in even the most restrictive budgets.
- Standard 0-10V dimming driver.
- Meets ADA requirements.
- Manufactured in the U.S.A.

## DIMENSIONS



MC = Mounting Center  
A 4" octagonal junction box should be used for installation.

## ORDERING INFORMATION / OPTIONS EXAMPLE: 475-1LED19-BB

# 475

**MODEL**  
475 - Altera

**LAMP**

- 1LED9** - (1) 9W LED MODULE. 1100 Lumens
- 1LED14** - (1) 14W LED MODULE. 1550 Lumens
- 1LED19** - (1) 19W LED MODULE. 2000 Lumens

## HOUSING FINISH

- NA** - Natural Aluminum Ball
  - BB** - Brass Ball
  - PT** - Painted Ball (specify color)
- Consult factory for other finishes.*

## OPTIONS

- TL** - Top Lens
- BL** - Bottom Lens
- MB** - Brushed Aluminum Middle Bar
- DL** - Damp Label
- 30K** - 3000 Kelvin Temperature
- 35K** - 3500 Kelvin Temperature
- 40K** - 4000 Kelvin Temperature