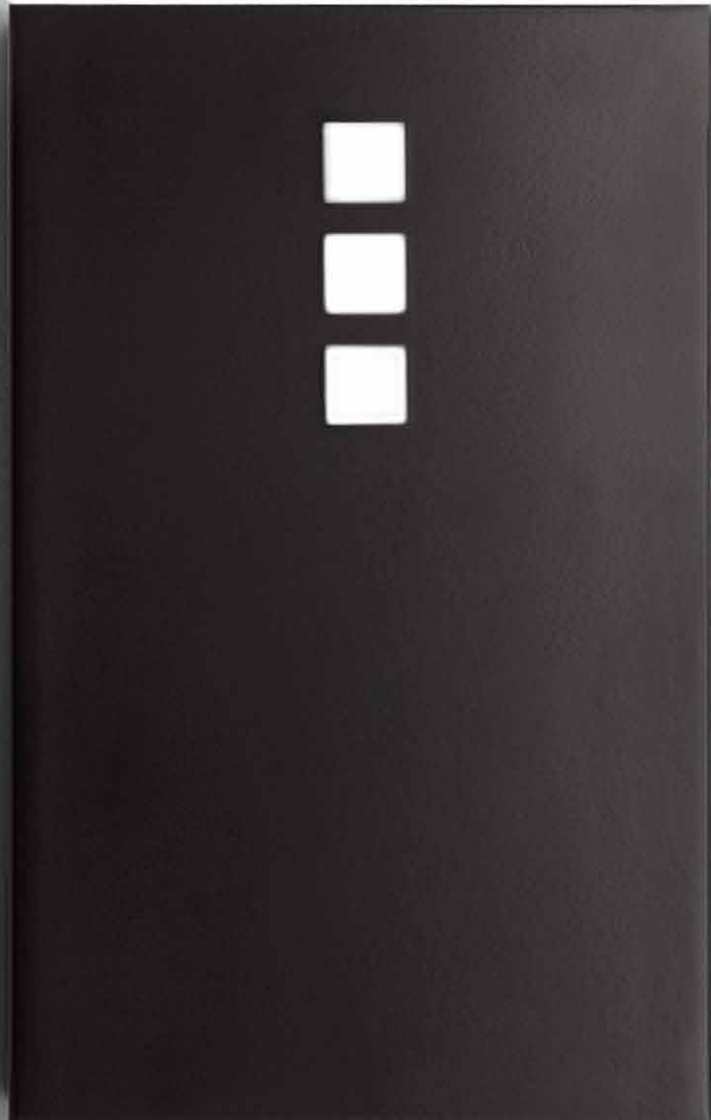


Available in LED

# 455 METAL WRAP

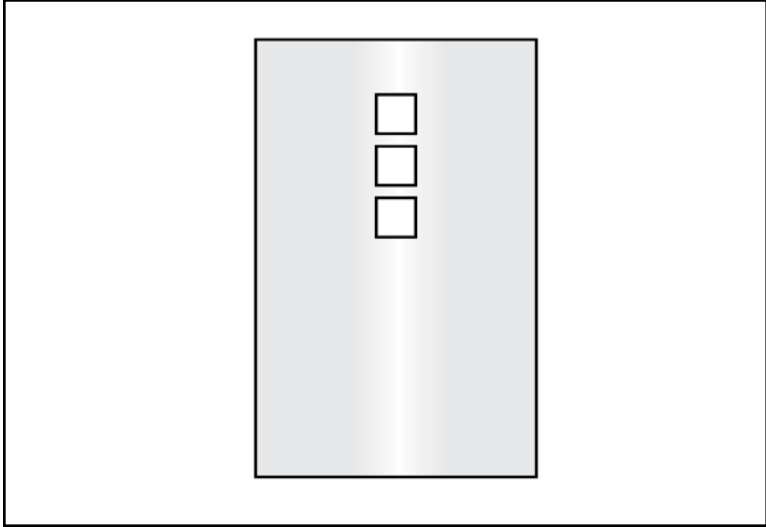


This clean, basic sconce provides a halo of light at an economical price. Solid metal construction and fastening methods ensure a rigid and sturdy fixture.

# 455 METAL WRAP

**Available in LED**

TYPE



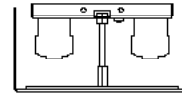
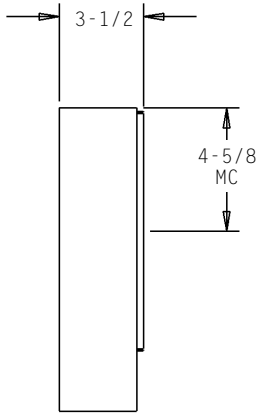
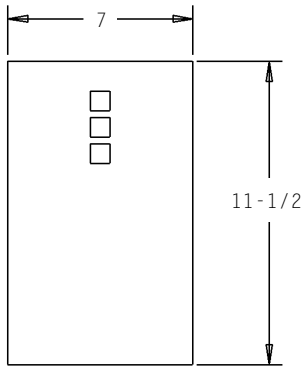
PROJECT: \_\_\_\_\_

LOCATION: \_\_\_\_\_

### FEATURES

- Economical sconce with rigid construction.
- Stylish windows with mechanically attached acrylic backing.
- Easy installation.
- Electronic, multi-volt (120/277) ballast is standard.
- All parts are treated with a five stage phosphate bonding process before being finished with a long lasting powder coat finish.
- Complies with ADA.
- No visible fasteners.
- Manufactured in the U.S.A.

### DIMENSIONS



MC = Mounting Center  
A 4" octagonal junction box should be used for installation.

### ORDERING INFORMATION / OPTIONS EXAMPLE: 455-2CFQ13-BRZ

## 455

#### MODEL

455 - Metal Wrap

#### LAMP

- 1CFQ13 - (1) 13w QUAD TUBE CF (G24Q-1 Base)
  - 1CFQ18 - (1) 18w QUAD TUBE CF (G24Q-2 Base)
  - 1CFQ26 - (1) 26w QUAD TUBE CF (G24Q-3 Base)
  - 2CFQ13 - (2) 13w QUAD TUBE CF (G24Q-1 Base)
  - 2CFQ18 - (2) 18w QUAD TUBE CF (G24Q-2 Base)
  - 2CFQ26 - (2) 26w QUAD TUBE CF (G24Q-3 Base)
  - 2LED8 - (2) 8w LED MODULES. 1060 Lumens
- Consult factory for other available lamps and LED Wattages.

#### HOUSING FINISH

- WHT - White
  - BLK - Black
  - SAL - Silver
  - BRZ - Bronze
- Consult factory for other finishes.

#### OPTIONS

- DL - Damp Label
- TL - Top Lens
- BL - Bottom Lens
- Lamp - Lamp provided, please specify color temperature