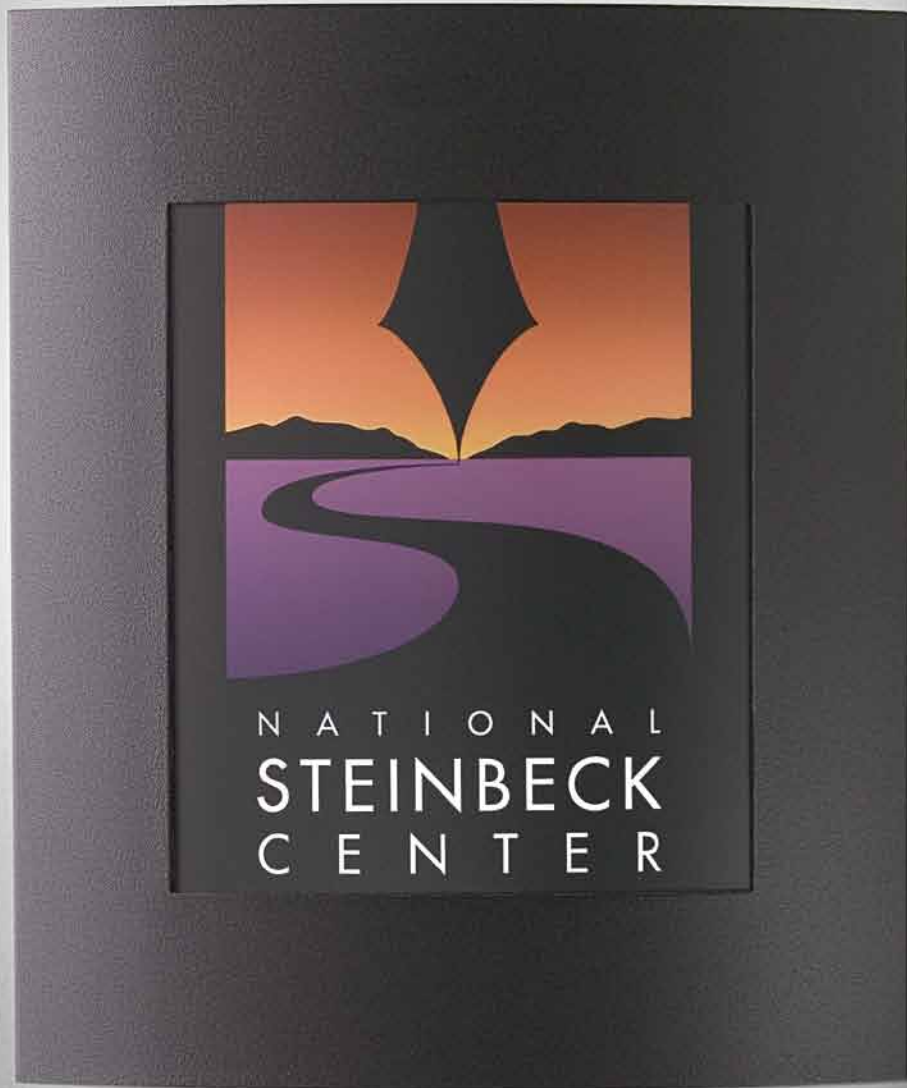


Available in LED

# 419 LIGHT IMAGE

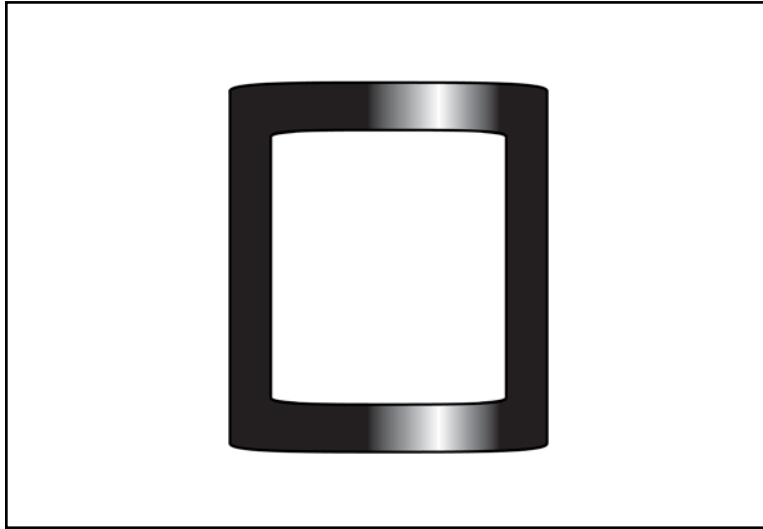


Decorative screens, placed in front of the luminous opening, allow this luminaire to be used as a highlighter of logos, artwork or signage. Available with a wide variety of lamps, varied light levels can be provided.

# 419 LIGHT IMAGE

Available in LED

TYPE



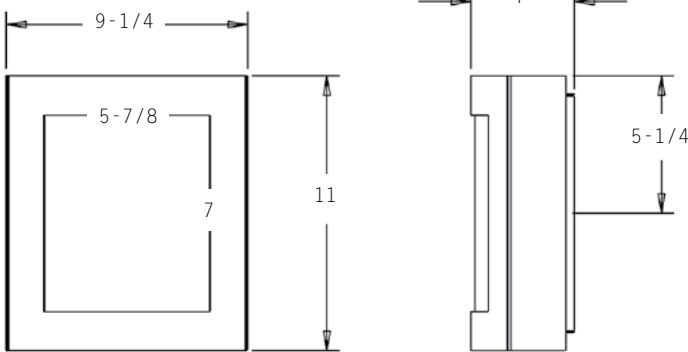
PROJECT: \_\_\_\_\_

LOCATION: \_\_\_\_\_

## FEATURES

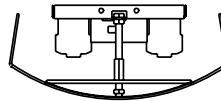
- Decorative screens on the luminaire fascia enable the fixture to highlight signage, artwork or logos.
- Patented process uses a four-color printing process insuring all artwork is precise in color and design.
- Ink and lens are U.V. resistant insuring there is no future “yellowing” or disfiguring of the lens.
- The patented printing process and the unitized design of the luminaire allow the fixture to be used even in restrictive budget situations.
- When using the luminaire for signage, actual verbiage, font type and font size must be specified. An Illustrator or Freehand file is required for artwork or logos.
- Meets all ADA requirements.
- Manufactured in the U.S.A.

## DIMENSIONS



MC = Mounting Center

A 4" octagonal junction box should be used for installation.



## ORDERING INFORMATION / OPTIONS EXAMPLE: 419-2CFQ13-WHT-Logo

# 419

### MODEL

419 - Light Image

### LAMP

- 1CFQ13 - (1) 13w QUAD TUBE CF (G24Q-1 Base)
- 1CFQ18 - (1) 18w QUAD TUBE CF (G24Q-2 Base)
- 1CFQ26 - (1) 26w QUAD TUBE CF (G24Q-3 Base)
- 1CFT32 - (1) 32w TRIPLE TUBE CF (GX24Q-3 Base)
- 1CFT42 - (1) 42w TRIPLE TUBE CF (GX24Q-3 Base)
- 2CFQ13 - (2) 13w QUAD TUBE CF (G24Q-1 Base)
- 2CFQ18 - (2) 18w QUAD TUBE CF (G24Q-2 Base)
- 2CFQ26 - (2) 26w QUAD TUBE CF (G24Q-3 Base)
- 1LED9 - (1) 9W LED MODULE. 1100 Lumens
- 1LED14 - (1) 14W LED MODULE. 1550 Lumens
- 1LED17 - (1) 17W LED MODULE. 1875 Lumens
- 1LED19 - (1) 19W LED MODULE. 2200 Lumens

Consult factory for other available lamps and LED Wattages.

### HOUSING FINISH

- WHT - White
  - BLK - Black
  - SAL - Silver
  - BRZ - Bronze
  - SS - Stainless Steel
- Consult factory for other finishes.

### OPTIONS

- DL - Damp Label
- Lamp - Lamp provided, please specify color temperature
- DIM - Dimming Ballast
- TL - Top Lens
- BL - Bottom Lens
- COVL - Clear overlay placed in front of artwork

### SCREEN TYPE

- Logo - Logo artwork (Freehand or Illustrator file must be supplied)
- Numbers - Specify numbers, font type and font size
- Picture - Artwork (Freehand, photoshop or Illustrator file must be supplied)

**Indessa**  
LIGHTING

PHONE: 509.924.0243 • FAX: 509.924.2607 • www.indessa.com

Indessa Lighting reserves the right to make design revisions without prior notice.

