

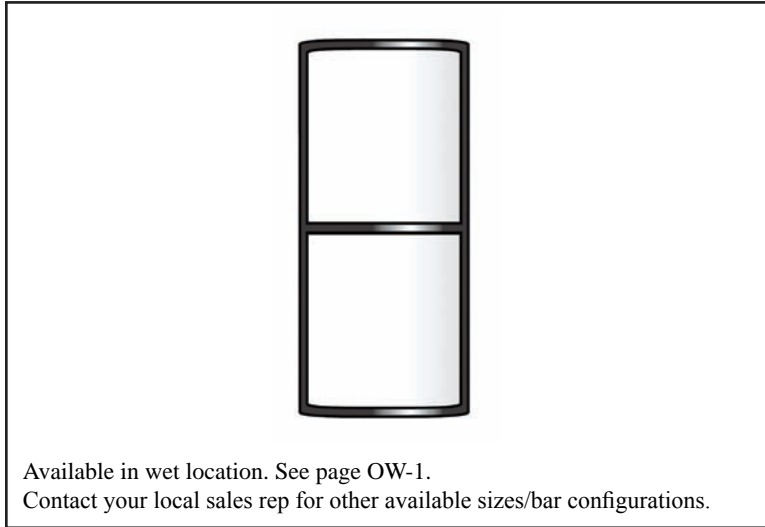
409 CLASSIC



This popular wall sconce is a timeless classic. Constructed of solid bar stock this product is available with a number of bar configurations as well as an assortment of lamp options.

409 CLASSIC

TYPE



Available in wet location. See page OW-1.
Contact your local sales rep for other available sizes/bar configurations.

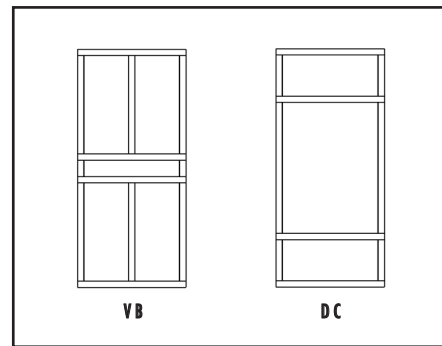
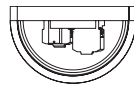
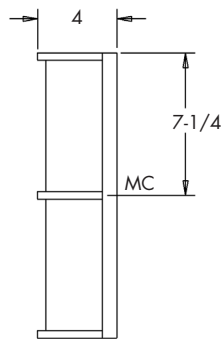
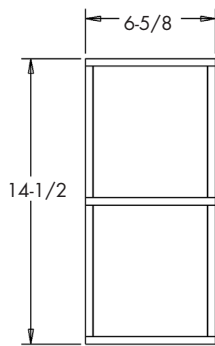
PROJECT: _____

LOCATION: _____

FEATURES

- A timeless design for a classic look.
- Cage constructed of solid bar stock for strength and rigidity.
- Electronic, multi-volt (120/277) ballast is standard.
- All parts are treated with a five stage phosphate bonding process before being finished with a long lasting powder coat finish.
- Acrylic lens for maximum lens uniformity.
- Complies with ADA.
- No visible fasteners.
- Manufactured in the USA.

DIMENSIONS



ORDERING INFORMATION / OPTIONS EXAMPLE: 409-2CFQ13-SAL

409

MODEL
409 - Classic

LAMP

2CFQ13 - (2) 13W QUAD TUBE CF (G24Q-1 BASE)
2CFQ18 - (2) 18W QUAD TUBE CF (G24Q-2 BASE)
2CFQ26 - (2) 26W QUAD TUBE CF (G24Q-3 BASE)
 Consult factory for other available lamps.

HOUSING FINISH

WHT - White
BLK - Black
SAL - Silver
BRZ - Bronze
 Consult factory for other finishes.

OPTIONS

VB - Vertical Bar Housing
DC - Double Cross Bar
BL - Bottom Lens
TL - Top Lens
TC - Top Aluminum Cover
BC - Bottom Aluminum Cover
DL - Damp Label
Lamp - Lamp provided, please specify color temperature

Indessa
Lighting

PHONE: 509.924.0243 • FAX: 509.924.2607 • www.indessa.com

Indessa Lighting reserves the right to make design revisions without prior notice.



IW-1